



THE PRESERVE AT CANYON RIDGE



All drawings and measurements are for marketing purposes only and are approximate.

Due to COVID 19: Because of supply chain delays or lack of material availability, materials and selections might be substituted with equal quality and pricing by the builder.

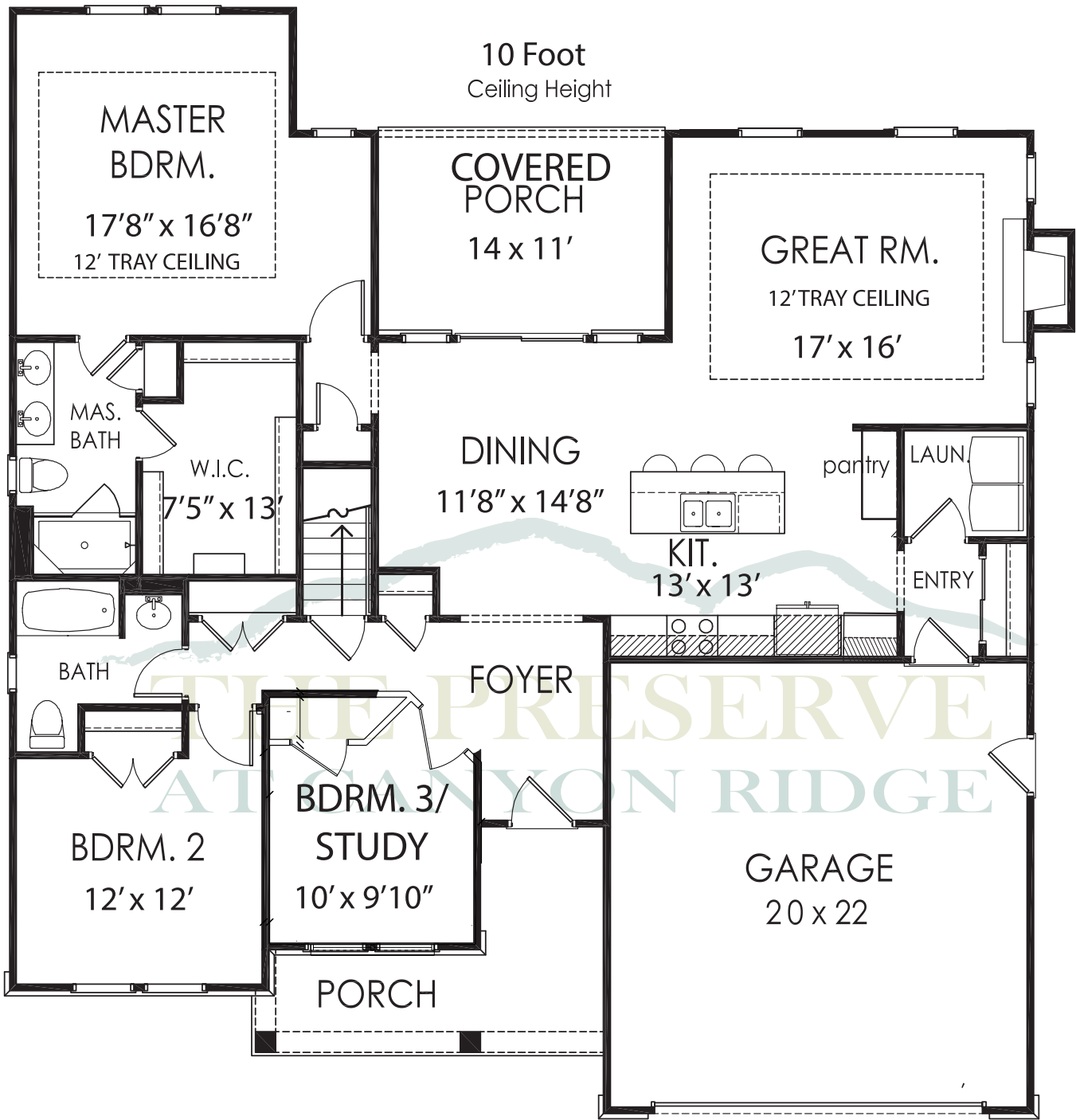
OLIVIA- RANCH- 1800 SQ FT

- Owners Suite on The Main
- 3 Bedroom
- Study/3rd Bedroom
- 2 Bath
- Great Room
- Dining Room
- Covered Front Porch
- Covered Back Deck
- Covered Basement Back Patio
- 2-Car Garage
- Laundry Room
- Garage Entry Mud Room
- Plus 1804 SQ FT Unfinished Daylight Basement

OPTIONAL/UPGRADES

- Add Shake-Style Siding
- Add Small Dormmer
- Add Additional Stone
- Add Trey Ceiling

ThePreserveAtCanyonRidge.com
770-776-8665



1800 SQ FT

All drawings and measurements are for marketing purposes only and are approximate.

Due to COVID 19:
 Because of supply chain delays or lack of material availability, materials and selections might be substituted with equal quality and pricing by the builder.

All drawings and measurements are for marketing purposes and are approximate.